



**Water savings and water stewardship, a combined approach  
to reduce groundwater abstraction by industrials**

**AIH, 18<sup>th</sup> of May 2022**

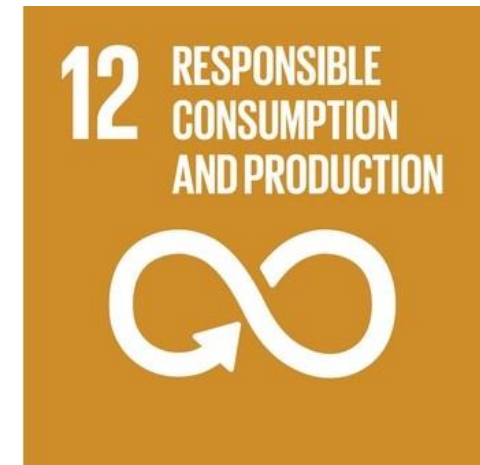
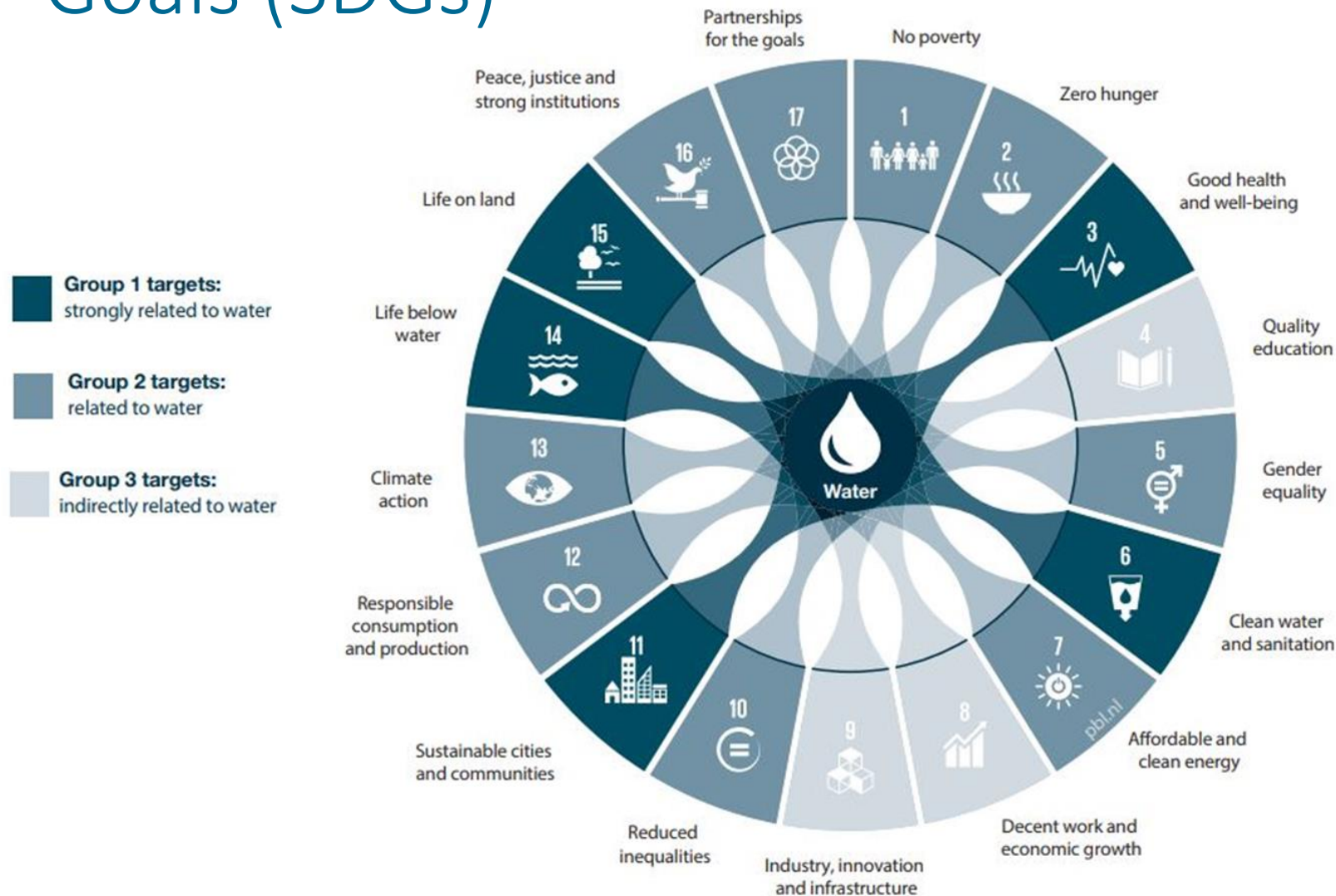
Antea Group

Understanding today.  
Improving tomorrow.

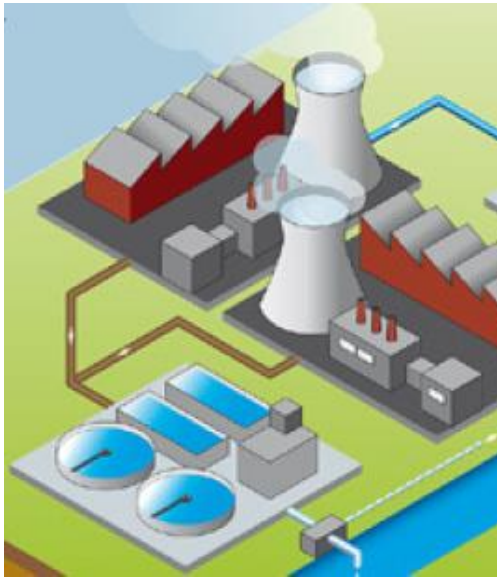


**Nadia JEBBOUR**  
**Water Sustainability Lead**  
**Antea France**

# Water and the Sustainable Development Goals (SDGs)



Source: How water is connected to all SDGs. UN High-Level Panel on Water.



**Water stewardship** is defined as the use of water that is socially and culturally equitable, environmentally sustainable and economically beneficial, achieved through a stakeholder-inclusive process that includes both site- and catchment-based actions.



Every company's water program is different, but they follow a common journey and framework to face environmental challenges

# Making Context-Informed Investments



---

**Lens #1: Facility Operations  
and Resiliency**

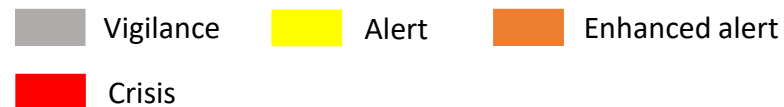
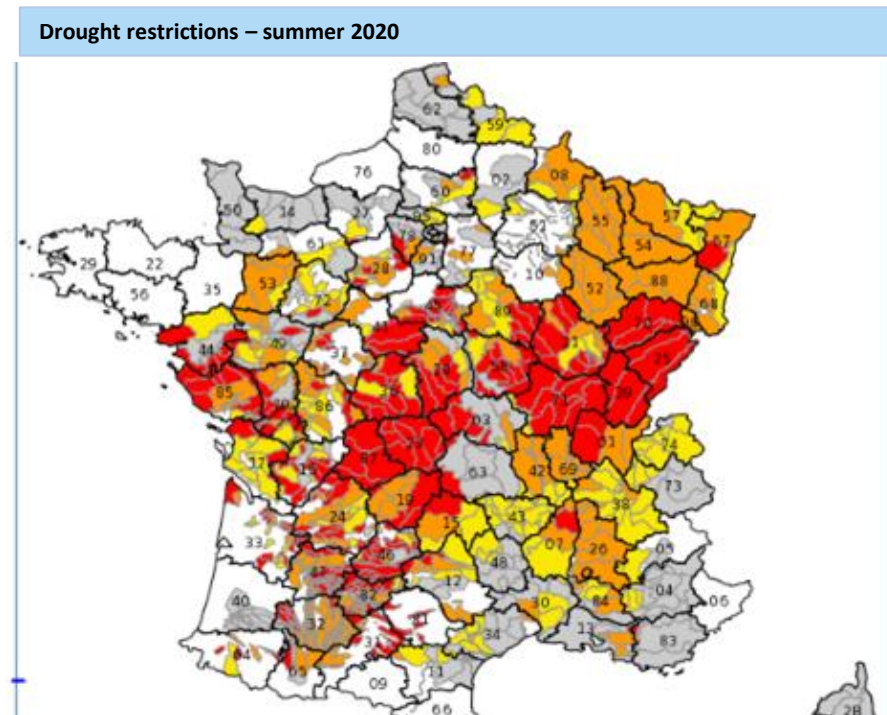
---

**Lens #2: Basin Conditions  
and Context**

Understanding today.  
Improving tomorrow.

# Lens #1: Facility Operations and Resiliency

→ **French example:** Increasing regulatory pressure with prefectural framework order during dry periods



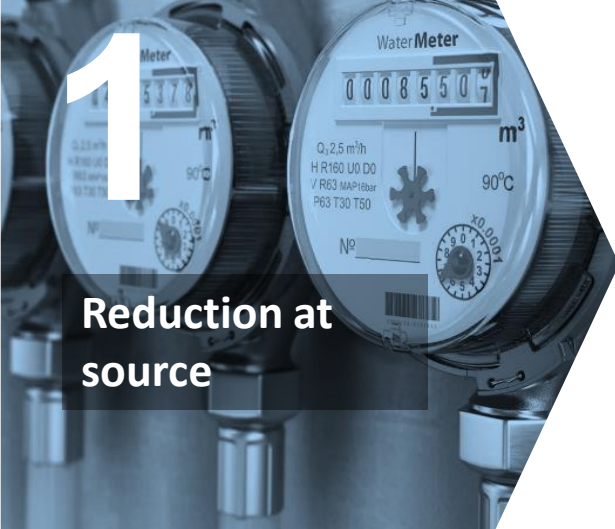
→ All users concerned

→ Actions to:

- Limit withdrawals and consumption
- Strengthen discharge quality monitoring
- Monitor impacts on the receiving environment

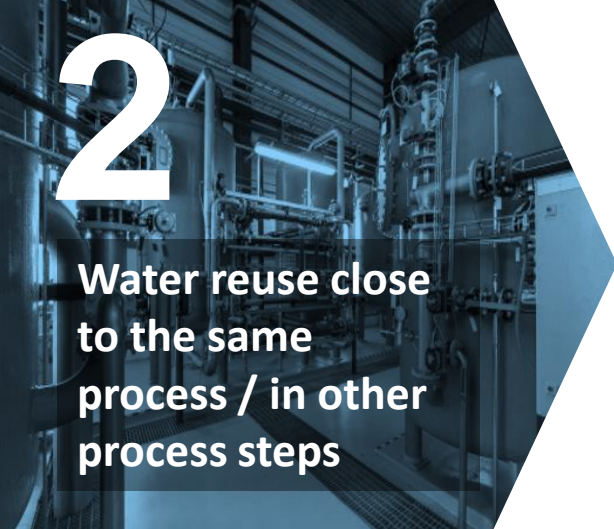
→ Meet regulatory constraints

# Action prioritization



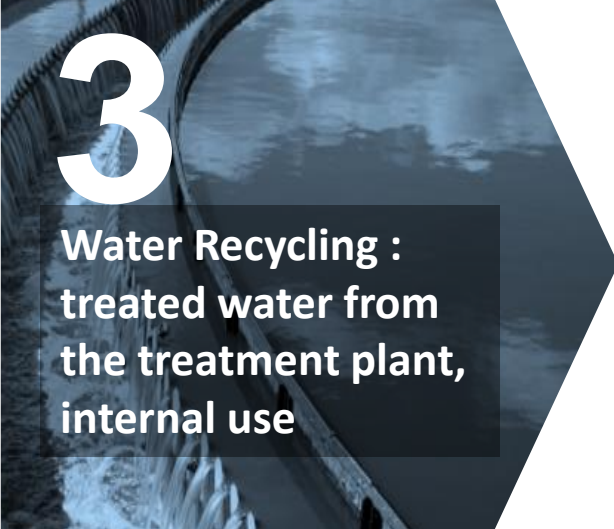
1  
**Reduction at source**

- Avoid using
- Optimize processes to minimize water consumption
- Improve practices



2  
**Water reuse close to the same process / in other process steps**

*Water that does not require additional treatment or reconditioning*



3  
**Water Recycling : treated water from the treatment plant, internal use**

*Water that requires additional treatment or reconditioning*



4  
**Circular economy project**

*Water that requires additional treatment or reconditioning for beneficial use off-property by the company or a third party*

# Making Context-Informed Investments



---

**Lens #1: Facility Operations  
and Resiliency**

---

**Lens #2: Basin Conditions  
and Context**

Understanding today.  
Improving tomorrow.



# Water Stewardship with Stakeholder Engagement



### Setting Facility Expectations and Accountabilities:

- Understanding the Watershed
- Stakeholder Mapping and Evaluation
- Watershed/Community Conditions
- Partnership Facilitation, Stakeholder Committee

# In conclusion...

- We need to act at the level of the facility and the watershed
- We must involve the different stakeholders (public, private) to find more efficient groundwater saving actions



Thank you

If you have any questions...

Antea Group

Understanding today.  
Improving tomorrow.

*We do more than effectively solve client challenges; we deliver sustainable results for a better future.*



**Nadia Jebbour**

Antea Group France

Water Sustainability Lead

[nadia.jebbour@anteagroup.fr](mailto:nadia.jebbour@anteagroup.fr)

+33 6 22 06 84 36

Understanding today.  
Improving tomorrow.