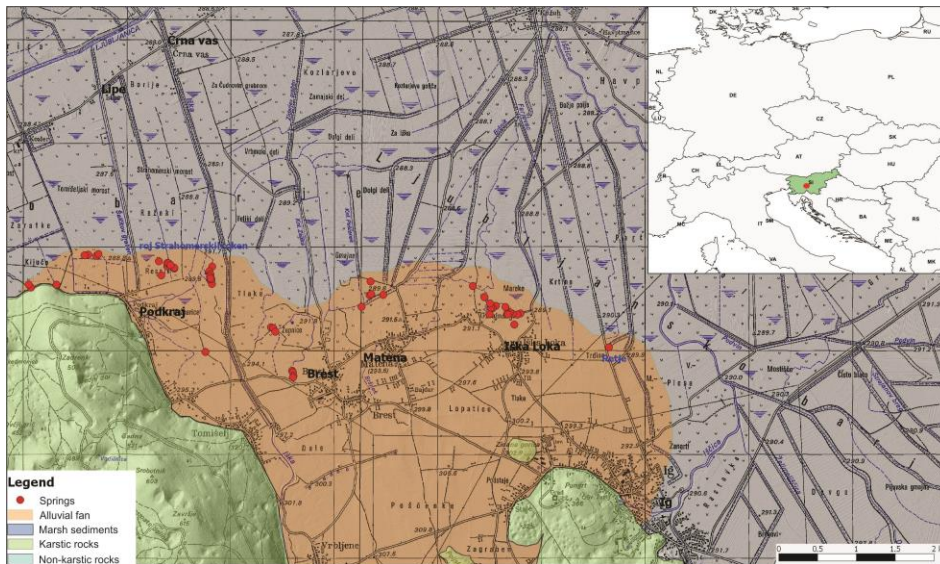


MYRE POOL SPRINGS AS INDICATOR OF REGIONAL DEPENDENT GROUNDWATER FLOW – CASE STUDY FROM LJUBLJANA MARSH SLOVENIA

Mihael BRENČIČ^{1,2}, Teja KERŠMANC³, Maša BRATINA⁴, Branka BRAČIČ ŽELEZNIK⁵

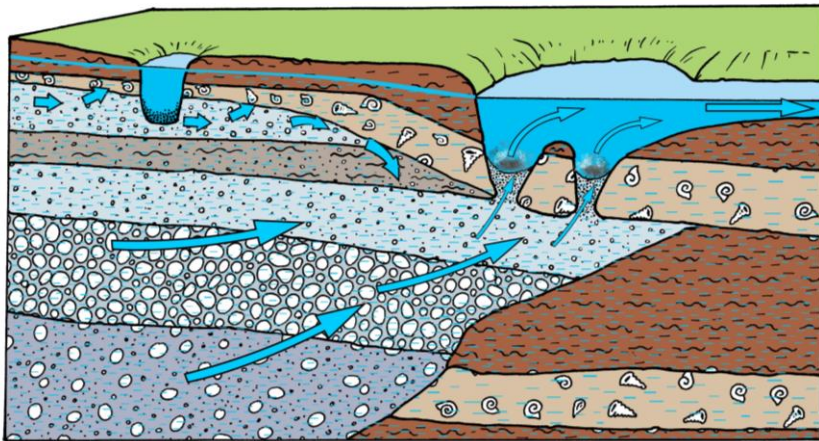
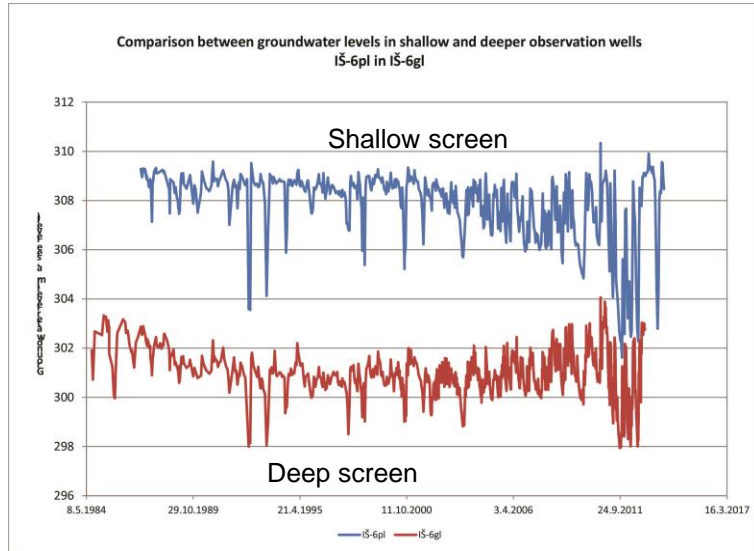
1. Department of Geology, Natural Sciences and Engineering Faculty, Ljubljana, Slovenia
e-mail mihael.brencic@ntf.uni-lj.si
2. Geological Survey of Slovenia, Ljubljana, Slovenia
3. Department of Geology, Natural Sciences and Engineering Faculty, Ljubljana, Slovenia
4. Ljubljana Marsh Nature Park, Ljubljana, Slovenia
5. JP VODOVOD-KANALIZACIJA d.o.o., Ljubljana, Slovenia

Abstract no. 2364



43rd IAH CONGRESS
25-29th September, 2016

RECHARGE AREA



GROUNDWATER LEVEL MAP : 27.12.2010

