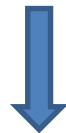


# A multi-scale and multi-partner program in search of water within hard rock aquifers :

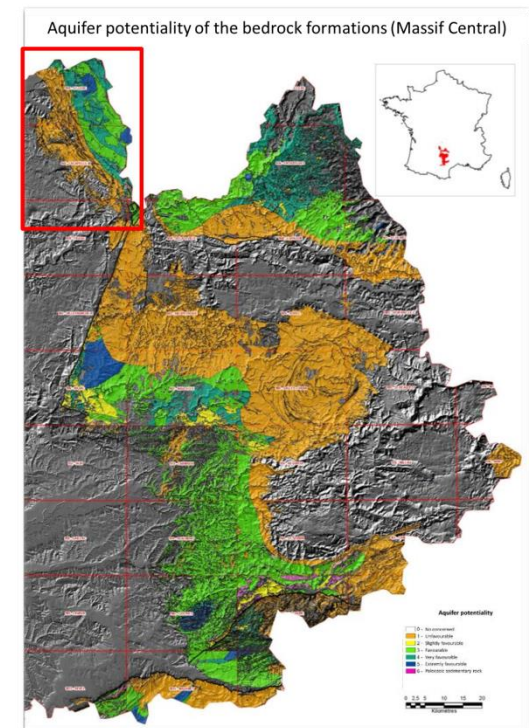
## from decision making tool to the borehole completion and use

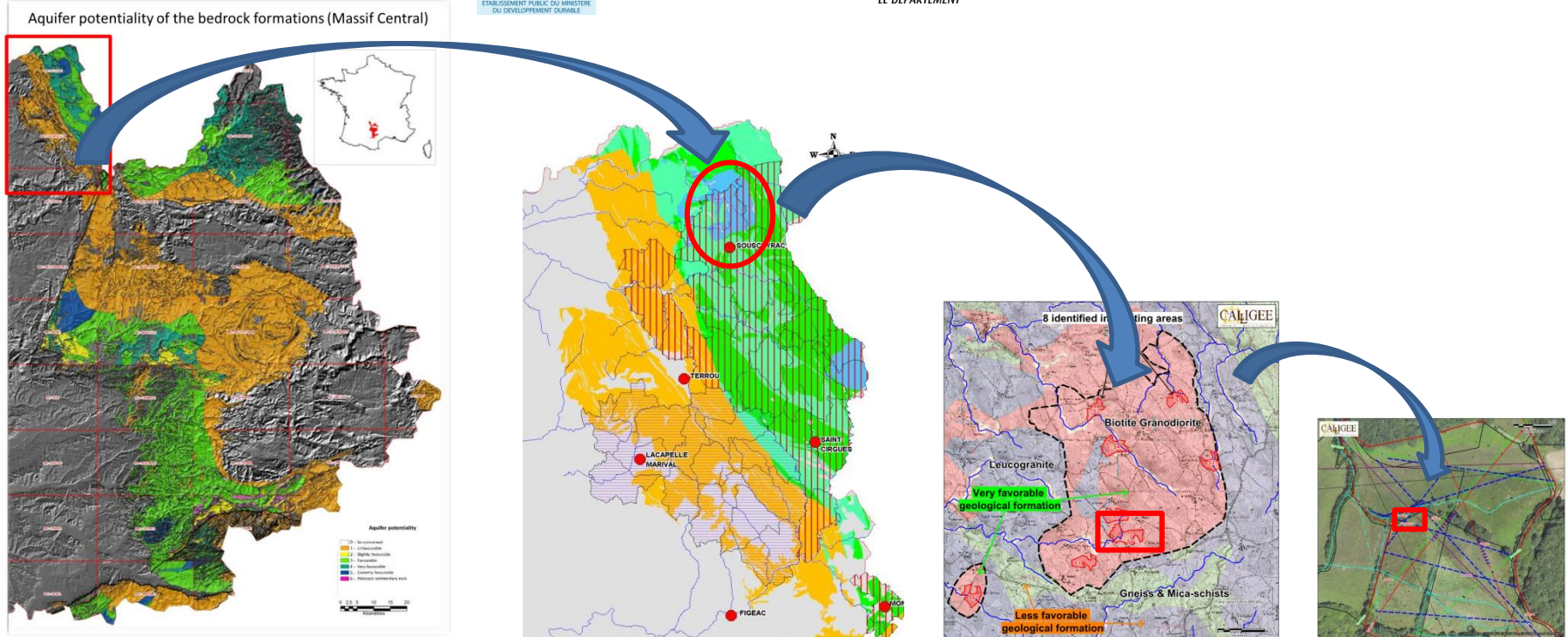
JM Gandolfi <sup>(1)</sup>, D. Douay <sup>(2)</sup>, P. Marchet <sup>(3)</sup>, C. Delporte <sup>(4)</sup>

Program in western part of Massif Central, France  
Surface area: about 7 500 km<sup>2</sup>  
Hard rock formations  
Water shortages during the dry season,



Gathering every stakeholders working in the field of water resource, from de Research community to local water supply managing body





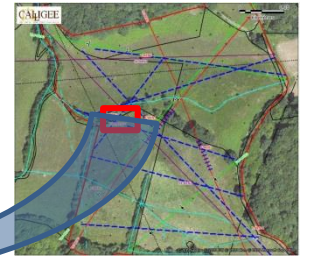
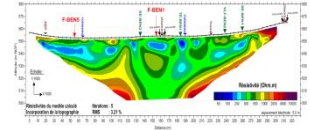
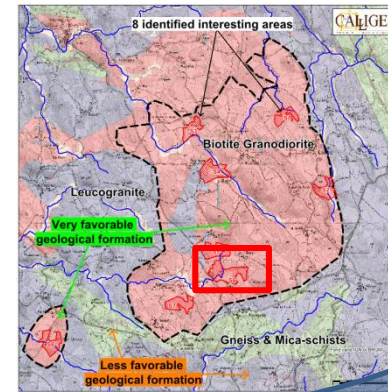
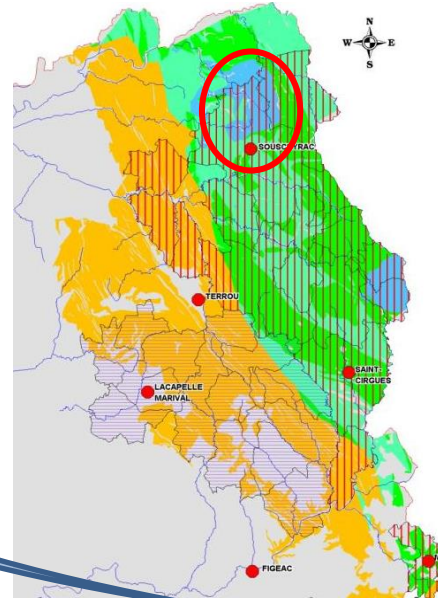
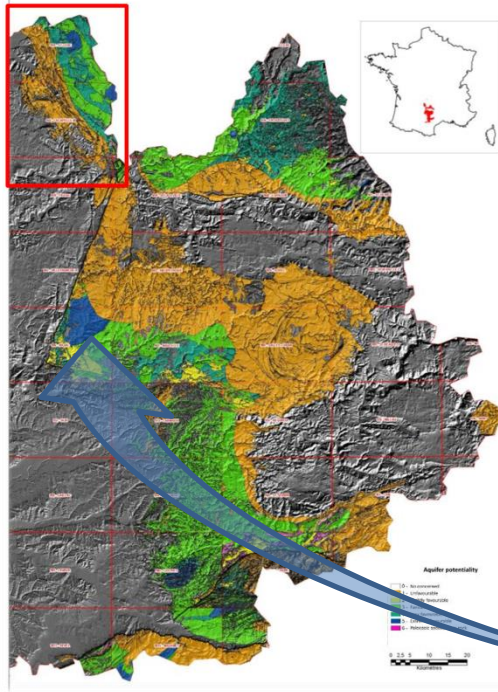
**French Geological Survey (BRGM):** Ranking the hard rock formations according to their hydrogeological interest

**Department of Lot assisted by Calligee:** to tap alternative groundwater resource based on technical and human multicriteria assessment

**Adour-Garonne Water Agency:** financial support all along the program



Aquifer potentiality of the bedrock formations (Massif Central)



It has allowed a feedback to consolidate further similar process for:

- Bringing an adapted answer to provide local drinking water,
- Improving the success rate of borewell locations in hard rock aquifers
- Making available to everyone the results of the Research, improving in the same time the methodological approach for the mapping.

