



Schweizerische Eidgenossenschaft
Confédération suisse
Confederazione Svizzera
Confederaziun svizra

Swiss Confederation

Linkage of ecological and hydrodynamic aquifer parameters

KOZEL, Ronald & SINREICH, Michael

Swiss Federal Office for the Environment FOEN - Hydrology Division

CH – 3003 Berne

www.bafu.admin.ch

ronald.kozel@bafu.admin.ch

N°abstract : 1984



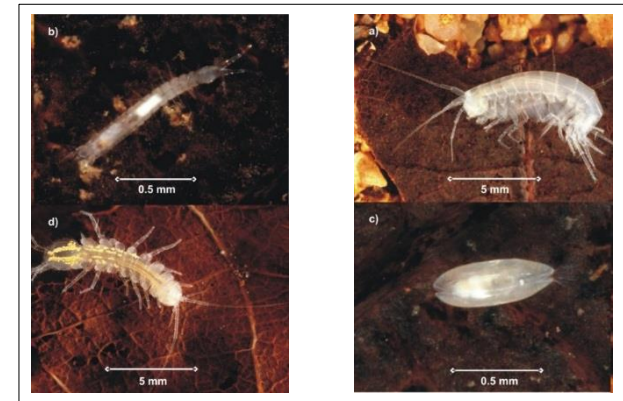
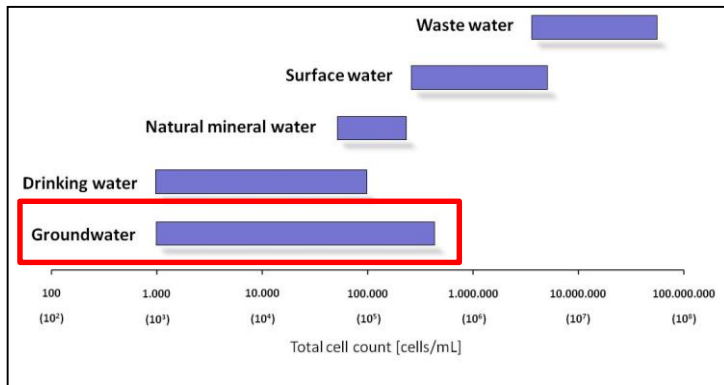
25-29th
September 2016

Montpellier, France
CORUM CONFERENCE CENTER

43rd
IAH
congress



Two pilot studies in the frame of the Swiss NAQUA National Groundwater Monitoring



Cell density in groundwater :
1.000 up to 300.000
bacteria cells/mL

Fauna in groundwater :
high diversity

What does this mean in terms of

- aquifer typology ?
- groundwater vulnerability ?

Looking for answers?

poster no. 1984